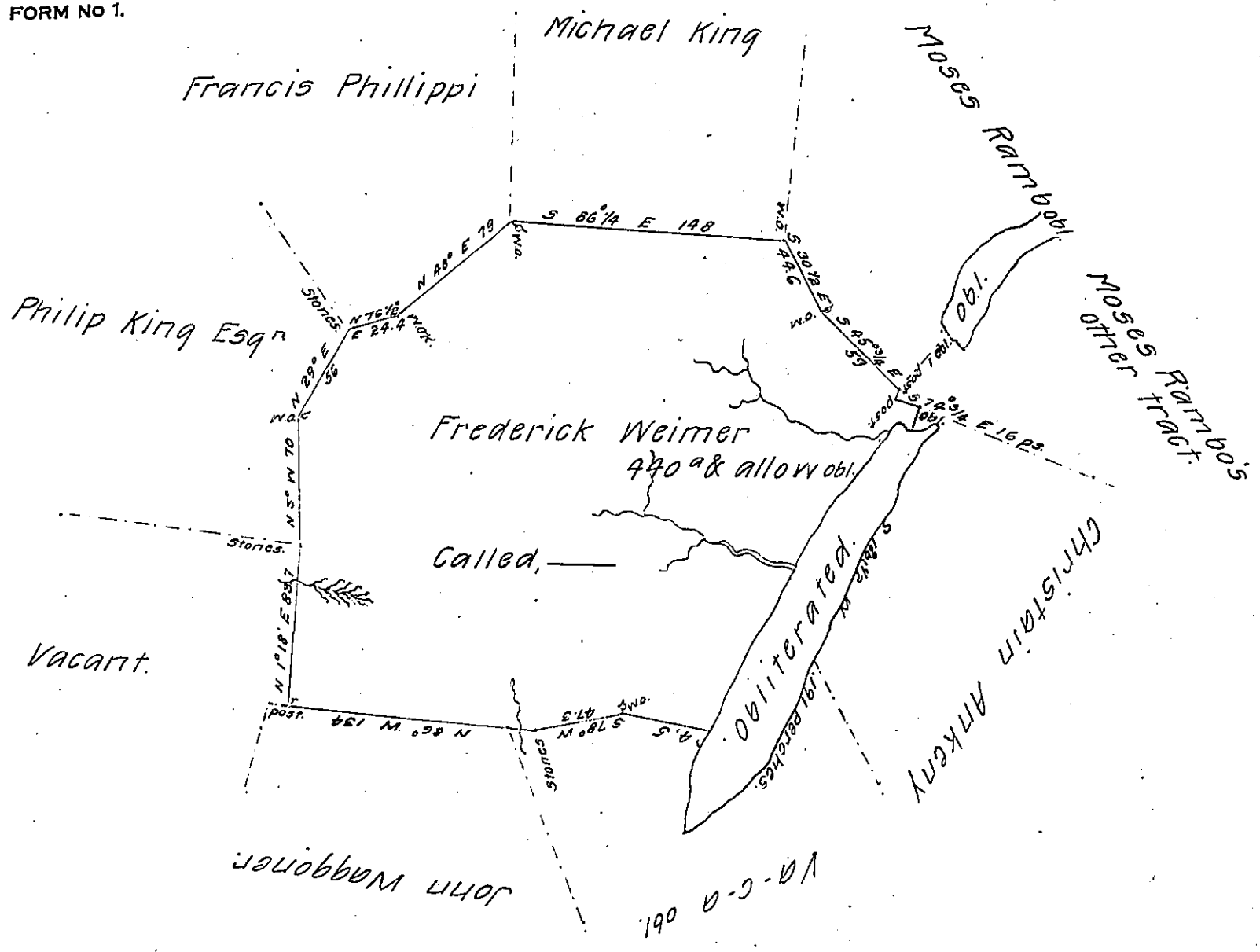


FORM NO 1.



Situate on the Waterdr of the Glade Branch in Milford
 T(obl.)ip Bedford County & Surveyed the 28th Day of March
 1793 In pursuance of a Warrant Dated the 15th Day of
 March 1793.

Pr-obl-der McGlean

To Daniel Brodhead Esquire Deputy
 Surveyor General.

IN TESTIMONY that the above is a copy of the original remaining on file in
 the Department of Internal Affairs of Pennsylvania, made
 conformably to an Act of Assembly approved the 16th day of
 February, 1833, I have hereunto set my Hand and caused
 the Seal of said Department to be affixed at Harrisburg,
 this twenty-seventh day of June 1907.

Henry Howe

Secretary of Internal Affairs.